




دلمار لدهانات قطاعات الألومنيوم
DELEMAR FOR ALUMINIUM COATING PROFILES

POWDER COATING CATALOG

The Art Of Coating



Powering Excellence Through Strong Hands.

CONTENTS

ABOUT US	03
VISION	03
MISSION	03
OUR PRODUCTION	04
OUR QUALITY	07
CERTIFICATES	14
OUR PROJECTS	17

ABOUT US

Delemar has one of the largest vertical line in the production of coated aluminum profiles in Egypt, Africa and the Middle East. Delemar For Aluminum Coating offers two coating lines horizontal, vertical . Anodizing has a production capacity of over 20,000 tons per year. The painting plant has been reinforced and established with the latest technology in the field of processing and painting.

VISION

Delemar for aluminum coating aims to having an extraordinary production system from high-quality products to top-notch machines all while complying international quality standards.

MISSION

Our mission is to provide exceptional coated aluminium products to our clients with the constant development of our products & services.



OUR PRODUCTION

Aluminum coating is carried out in 7 main stages distributed to 7 sections, interspersed with several stages all of them are subject to strict quality control and are as follows:

1. Sorting Stage



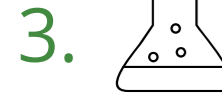
Where the sectors are sorted from drawing defects and treating what can be treated from the presence of aluminum feathers using sanding and processing machines or transferring it to the scrap department.

2. Hanging stage



In which the aluminum profiles are hanging according to the size and length of it in the appropriate way, which then allows the following stages to be easy to handle and give quality in the implementation of those stages.

3. Chemical Treatment



Delemar features one of the tallest processing tunnels, measuring more than 7 meters in height, with 12 processing stages. Divided into 4 main stages using European technology for chemical treatment, interspersed with 8 sub-stages,

A. Alkaline Degreasing

Where the sectors are cleaned of traces of grease, dust and any unwanted belongings.

B. Alkaline Etching

By using alkaline solutions to lighten the profiles with very fine parts up to 2 g/m².

C. Acid Etching

By using acidic solutions to lighten the markings of the sectors with very fine parts up to 1g/m².

D. Chrome Conversion

It uses chrome free technology, which is an alternative to hexavalent chromium and is an environmentally friendly technology that is safe for public health.

4. Drying stage



It is done using a drying oven by passing hot air currents with certain temperatures that allow drying the sectors without affecting the quality of the processing.

5. Powder Spraying or painting stage



It is done using electrostatic powder, which is the latest types of paints that are characterized by quality and diversity and are environmentally friendly as they do not emit any hazardous solvent odors, by passing it on the paint guns that work with the latest technology, which is the super corona technology.

6. Curing stage



By means of leveling ovens that reach a temperature of 200 ° C to meet the required heat to reach the ideal leveling degree of powder curing.

7. Inspection stage



Sorting is done according to Qualicoate's requirements for the phenotype, color, mechanical and physical properties of the profiles.

8. Packaging



Packaging is done using adhesive poly film materials to protect the profiles from scratching, then packaging using reinforced plastic, and the factory has the latest possible packaging methods to maintain the quality of the profiles until they are delivered to customers.

Quality is divided into two parts through which the quality of the sectors is monitored:

LINE QUALITY

Through which all production work is followed up to ensure that it meets all the conditions required to produce a final product at the highest level of quality, and within the requirements of the Quali-Coat from measuring the thickness of the paint layer, the degree of glossiness, the degree of color and the apparent shape as well.

01



LABORATORY TESTING

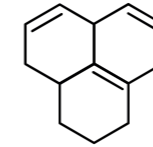
Delemar has one of the largest quality labs in Egypt, the Middle East and Africa It was established with the latest European and American technology methods, taking into account the requirements of the quality marks of ISO and Quali-coat, as well as the American quality certificate.

02



Where the laboratory is divided into several sections:

A. Chemical Analysis And Testing Department



In it, the analysis of chemical treatment basins is followed up regularly every two hours throughout the shift to ensure the quality of the concentrations and temperatures of the required chemicals to give the appropriate quality and take corrective action in the event of any defect.

B. Mechanical And Physical Testing Department



Multiple tests are carried out using the latest equipment to match them with the required international quality, which is represented by :



1. PHYSICAL TESTS

- A. Measuring the thickness of the coated layer using the thickness gauges.
- B. Measuring the degree of gloss using a gloss meter and matching it to the color specification.
- C. Measuring the degree of color using a colorimeter and matching it to the color specification.

OUR QUALITY

2. MECHANICAL TESTS



A. IMPACT TEST

Using the impact device and see if there is any kind of cracks.



B. BENDING TEST

Using a bending machine to also see if there are any cracks.



C. ADHESION TEST

Using a prescribed knife to know the strength of adhesion and this test is Either on dry or after placing the samples in vapor pressure for a period of time (2 hrs).



D. HARDNESS TEST

To measure the hardness of the coating after curing.



E. MEASURING

The thickness of the paint layer before curing, and Delemar has the equipment to measure the thickness of the coating before curing unlike any other coating applicator.

C.Weathering And corrosion Testing Department

Delemar is the only company in Egypt and Africa that owns weathering test equipment as an aluminum company and the company is very interested in weathering tests due to its important impact on the quality of paints as it gives certificates of paint quality up to 30 years according to the type of paint powder used and Delemar is distinguished by these tests from other companies that do not have such a modern including these tests:



1. Acetic Acid Salt Spray Test (AASS)

A corrosion test that simulates the effects of the harsh marine environment on materials. It is more severe than the normal salt spray test (NSS) and is used to evaluate the corrosion resistance of materials that are likely to be exposed to salt spray, such as automotive components, marine hardware, and electronics. It is also applied to aluminum profiles after coating and depending on the alloy (pure alloy) & powder class to see if there are any blistering or infiltration.



Here at Delemar Aluminum Profile Coating, we are interested in weathering tests and AASS is one of them. The AASS test is performed by placing test specimens in a closed chamber and exposing them to a continuous fog of saline solution that has been acidified with acetic acid. The test conditions are typically controlled to a temperature of °35C and a salt fog concentration of %5.

The duration of the test can vary depending on the material being tested and the expected service life of the product, but is typically between 1000 and 2000 hours.

This test is also performed periodically every 45 days outside Egypt in accredited laboratories in Europe, Dubai and India to determine the conformity of our tests and the quality required.

2.Xenon Arc Test

Is a type of accelerated weathering test used to simulate the effects of sunlight, humidity, and temperature on materials. It is a valuable tool for manufacturers who want to assess how their products hold up over time when exposed to outdoor conditions.

-Commonly used to test : Paints and coatings, Plastics , Textiles , Building materials and adhesives.and many more materials exposed to outdoor environments.

A special room called a weather meter is used. This chamber contains a xenon lamp that emits light similar to sunlight, along with humidity and temperature controls.on the expected life of the product and the level of acceleration required.



Samples of the material are then placed in the weatherometer and exposed to a controlled cycle of light, humidity, and temperature.

This test is applied to aluminum profiles after painting to see how the coating is affected in terms of gloss and color after a period of time ranging from 1000 to 2000 hours, and accordingly the company gives guarantee starting from 10 years and up to 30 years.

Delemar has one of the latest devices to simulate xenon rays, which is not found in other companies as well.

CERTIFICATES



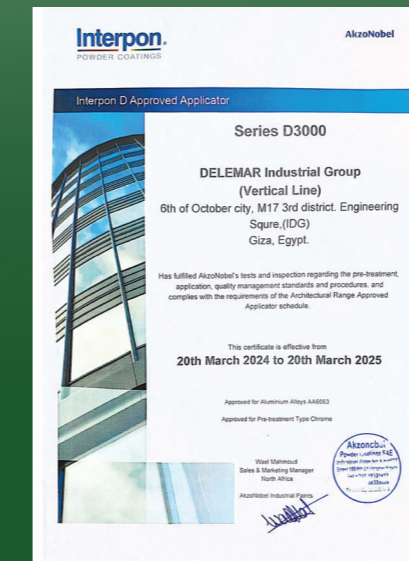
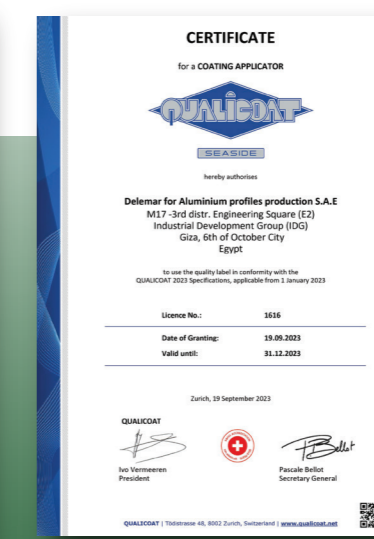
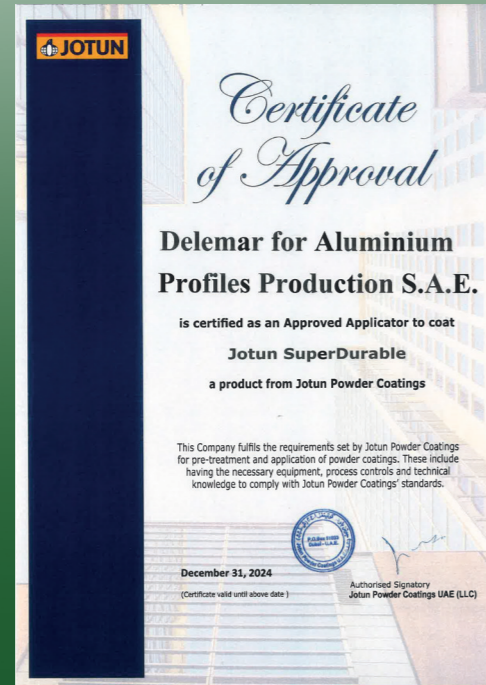
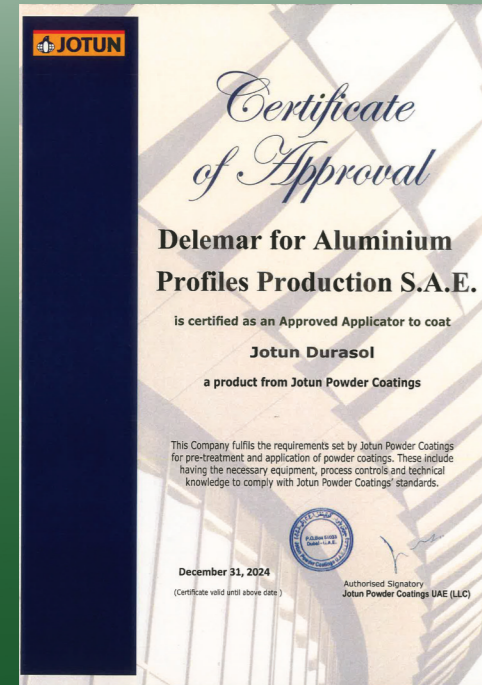
AkzoNobel



ISO certified
(9001- 45001 – 14001)



CERTIFICATES





Powder Coating Is The Paint That
Brings Surfaces To Life.

RAL COLORS

RAL1001	RAL5011	RAL6029	RAL7024	RAL7047	RAL9001	RAL3005	RAL6009	RAL7015	RAL7039	RAL8015	RAL9011
RAL1013	RAL5012	RAL7001	RAL7030	RAL8000	RAL9002	RAL5003	RAL6019	RAL7016	RAL7040	RAL8017	RAL9016
RAL1015	RAL5014	RAL7005	RAL7031	RAL8003	RAL9003	RAL5009	RAL6020	RAL7021	RAL7042	RAL8019	RAL8003
RAL1019	RAL5023	RAL7006	RAL7035	RAL8007	RAL9004	RAL5010	RAL6021	RAL7022	RAL7043	RAL8022	RAL8011
RAL3000	RAL6005	RAL7011	RAL7037	RAL8011	RAL9005	RAL1013	RAL5007	RAL6005	RAL7001	RAL7022	RAL7037
RAL3004	RAL6007	RAL7012	RAL7038	RAL8014	RAL9010	RAL1015	RAL5008	RAL6009	RAL7004	RAL7023	RAL7038

OUR PROJECTS



1. One Ninety Project

Quantity
 < 700 Tons

Color
 Drak Grey\ Bronze\ White Grey

Developer/Contractor
 (LMD) (Sabbour)

Class
 Superdurable



2. Capital Way Project

Quantity
 < 300 Tons

Color
 7003 Grey

Developer/Contractor
 The Waterway Developments

Class
 Standardurable



3. Madkour Group Project

Quantity
 < 200 Tons

Color
 7016 Grey

Developer/Contractor
 MADKOUR

Class
 Superdurable



4. High-speed rail (HSR) Project

Quantity
 < 250 Tons

Color
 7016 Grey

Developer/Contractor
 Concord

Class
 Hyperdurable

OUR PROJECTS



5. German University (GUC)

Quantity
< 200 Tons

Developer/Contractor
GUC

Color
7040 Grey

Class
Superdurable



6. MUST University

Quantity
< 300 Tons

Developer/Contractor
Samcrete

Color
9010

Class
Standardurable



7. El Borouj Compound

Quantity
<1000 tons

Developer/Contractor
Capital Group Properties

Color
BLACK9004

Class
Superdurable



8. Mountain View I City

Quantity
<800 tons

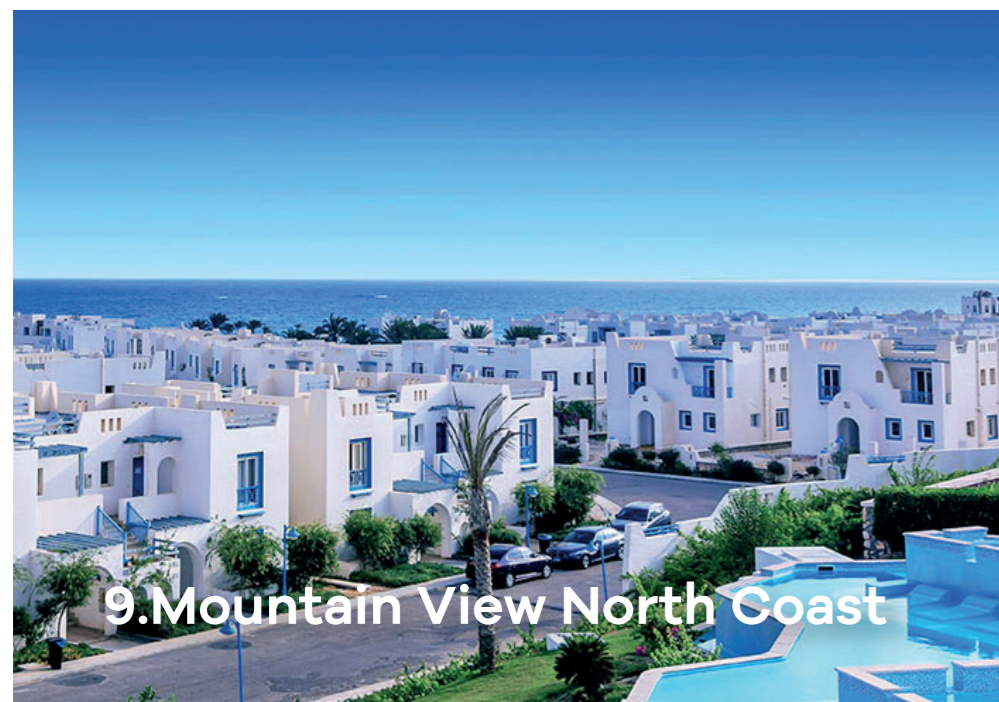
Developer
Mountain View

Contractor
Glass Metal - Skyline - DMC

Color
WHITE 9010

Class
Superdurable

OUR PROJECTS



9. Mountain View North Coast

Quantity
<800 tons

Developer
Mountain View

Contractor
Assass construction - DMC - Inshaa

Color
WHITE 9010

Class
Standardurable



10. pukka New Capital

Quantity
<500 tons

Developer
MBG DEVELOPMENT

Contractor
Frame - Alusky - Fayhaa

Color
Grey 7003

Class
Standardurable



11. Azzar New Cairo

Quantity
<800 tons

Developer
REEDY GROUP

Contractor
شركة م/ اشرف حسين للالومنيوم

Color
Black 9005

Class
Standardurable



12. suez Canal Authority Stadium

Quantity
<1000 tons

Developer
هيئة قناة السويس

Contractor
Alucore

Color
Black 9005

Class
Standardurable

OUR PROJECTS



13.khufu Pharma Factory

Quantity
<1000 tons

Developer
REEDY GROUP

Contractor
شركة خوفو لصناعة الادوية

Color
Metallic 9006

Class
Superdurable



14.Skylight City Stars Mall

Quantity
<200 tons

Developer
ARCO EGYPT

Contractor

Color
Black 9005

Class
Standardurable



15.R05 Buildings

Quantity
<500 tons

Developer
هيئة المجتمعات العمرانية

Contractor
Minium - Frame - Revator - Motaheda -
OMSI - Aluadams - Amico - Map

Color
WHITE 9010

Class
Standardurable



16.Hyde Park 18 Park

Quantity
<1000 tons

Developer
HYDE PARK

Contractor
شركة محمود حسن محمود الفرماوي -
Frame

Color
Black 9005

Class
Standardurable

OUR PROJECTS



17.Chill Out Park

Quantity

<200 tons

Developer

MOUNTAIN VIEW

Contractor

Minium

Color

WHITE 9010

Class

Standardurable



18.Regents Park

Quantity

<200 tons

Developer

AL DAWLIA DEVELOPMENT

Contractor

Façade Solutions

Color

WHITE 9010

Class

Standardurable



دلمار لدهانات قطاعات الألومنيوم
DELEMAR FOR ALUMINIUM COATING PROFILES

+20 110 311 1264

6th of October City

www.delemargroup.com